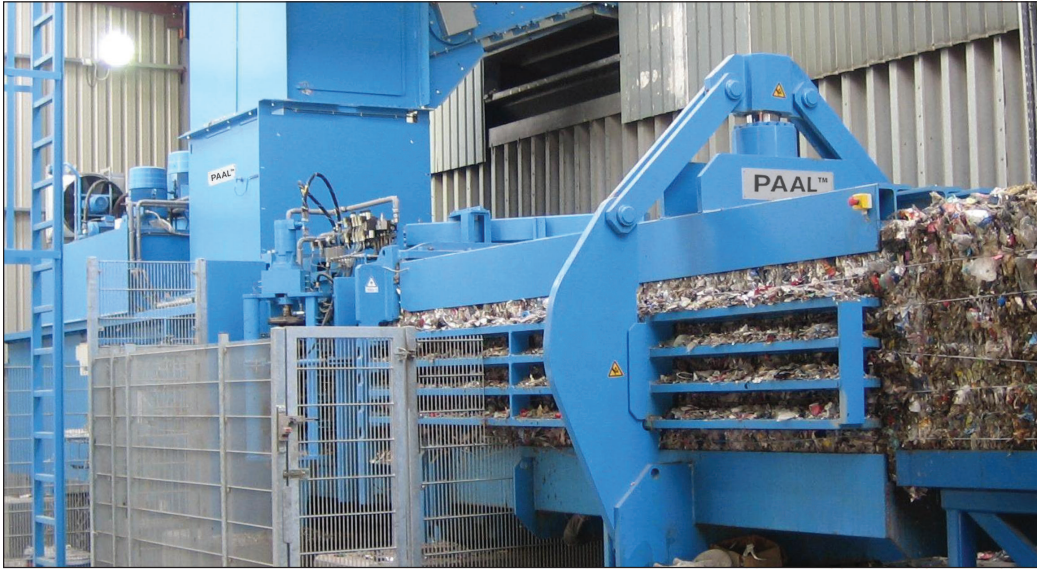


DOKON Baler

H-Series



Kadant PAAL's DOKON fully automatic channel baler's unique design makes the PAAL DOKON baler a powerful, efficient bale press with horizontal twine tying system. The PAAL DOKON baler provides a pressing force of 90 to 218 tons and offers a bale format of 32" x 44" or 44" x 44". The combination of high pressing force, independence from the cutting and compressing process, and patented pre-press setting combined with individual channel adjustment lead to high quality baling results.

Kadant PAAL was founded in 1854 in Osnabrück, Germany. Since its introduction of the first continuously operated horizontal baler in 1960, PAAL has delivered more than 30,000 machines and today is the #1 channel baler manufacturer in Europe.

PAAL™

DOKON Baler H-Series Overview



Features

- Optimized knife, stamper, and channel design
- Modern axial piston pumps with low drive power
- Advanced positional ram measurement system
- Twine tying

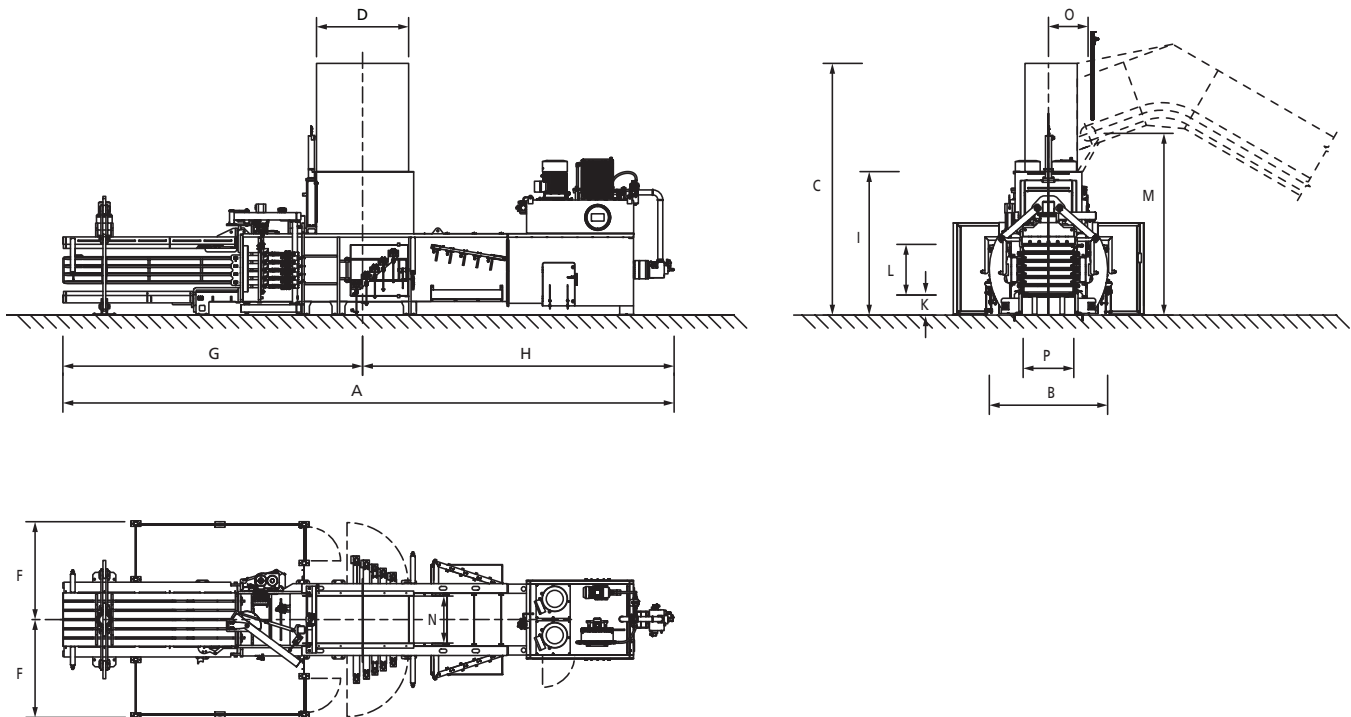


Benefits

- High throughput and bale weight
- Low energy consumption
- Easy disposal and no interference in a waste incineration process of the twine
- Low operation and maintenance costs
- Easy transport, storage, and handling of the spools
- Increased safety
- Low consumable costs by twine (approximately half the costs compared to wire)

Technical Data and Measurements

DOKON H-Series		275 H			500 H			600 H			700 H		
Pressing force	US tons	90			134			174			218		
Spec. pressing force	psi	132			144			186			232		
Tunnel cross section	inch	32 x 44			44 x 44			44 x 44			44 x 44		
Hopper opening	inch	63 x 41			79 x 41			79 x 41			79 x 41		
Feeding volume	yd ³	2.75			4.51			4.51			4.51		
Number of twines	pieces	4			5			5			5		
Driving power	HP	50	74	2 x 60	60	74	2 x 100	2 x 50	2 x 74	3 x 100	2 x 60	3 x 74	4 x 100
Press output (ideal)	max. yd ³ /h	543	798	942	562	850	1,484	824	1216	1,655	680	1,400	1,733
Press output (under load – 6.24 lb/ft ³)	max. yd ³ /h	288	392	484	327	425	785	445	628	948	412	752	1,046
Press Capacity (Weight at RDF)													
• 6.24 lb/ft ³	US t/h	24	33	40.5	27.5	36.3	131	37.5	53	95	34.7	63.3	105
• 9.36 lb/ft ³	US t/h	31.5	42	53	33	43	94	44.6	69	114	41.3	76	125
• 12.48 lb/ft ³	US t/h	34	45	56	38.5	50.7	110	53	73.8	133	48.5	89.2	146



	A	B	C	D	F	G	H	I	K	L	M	N	O	P
DOKON 275 H	37' 8"	7' 8"	17'	5' 3"	6' 8"	17' 4"	20' 3"	9' 3"	1' 5"	2' 7"	11' 11"	3' 4"	3'	3' 7"
DOKON 500 H	43' 7"	8' 5"	17' 11"	6' 6"	6' 8"	21' 4"	22' 3"	10' 2"	1' 5"	3' 7"	12' 10"	3' 4"	3'	3' 7"
DOKON 600 H	45' 3"	8' 9"	17' 11"	6' 6"	6' 8"	22' 11"	22' 3"	10' 2"	1' 5"	3' 7"	12' 10"	3' 4"	3'	3' 7"
DOKON 700 H	48'	8' 9"	17' 11"	6' 6"	6' 8"	25' 3"	22' 9"	10' 2"	1' 5"	3' 7"	12' 10"	3' 4"	3'	3' 7"

Dimensions are in feet and inches.

Dimensions are for reference only and subject to change.